



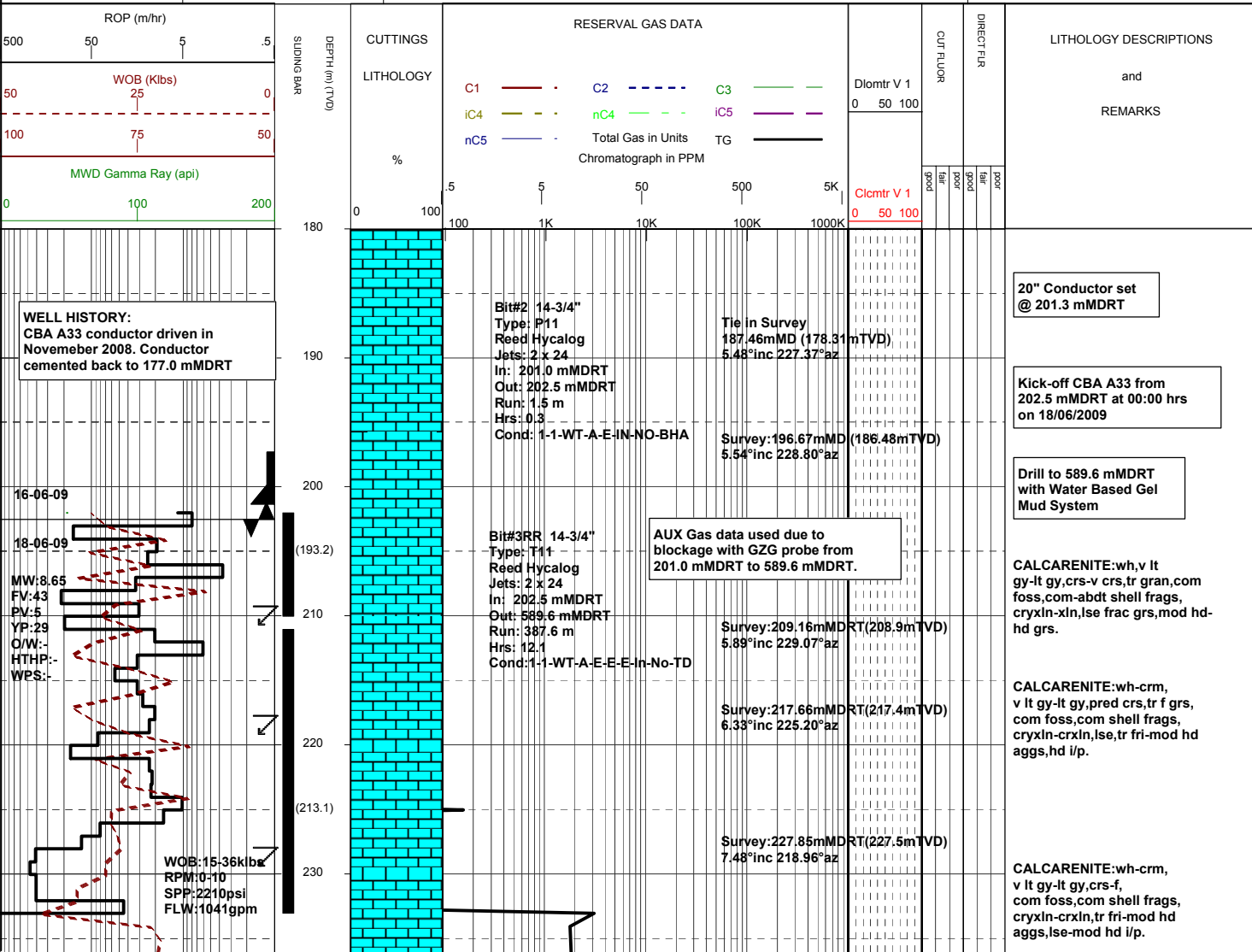
MASTERLOG

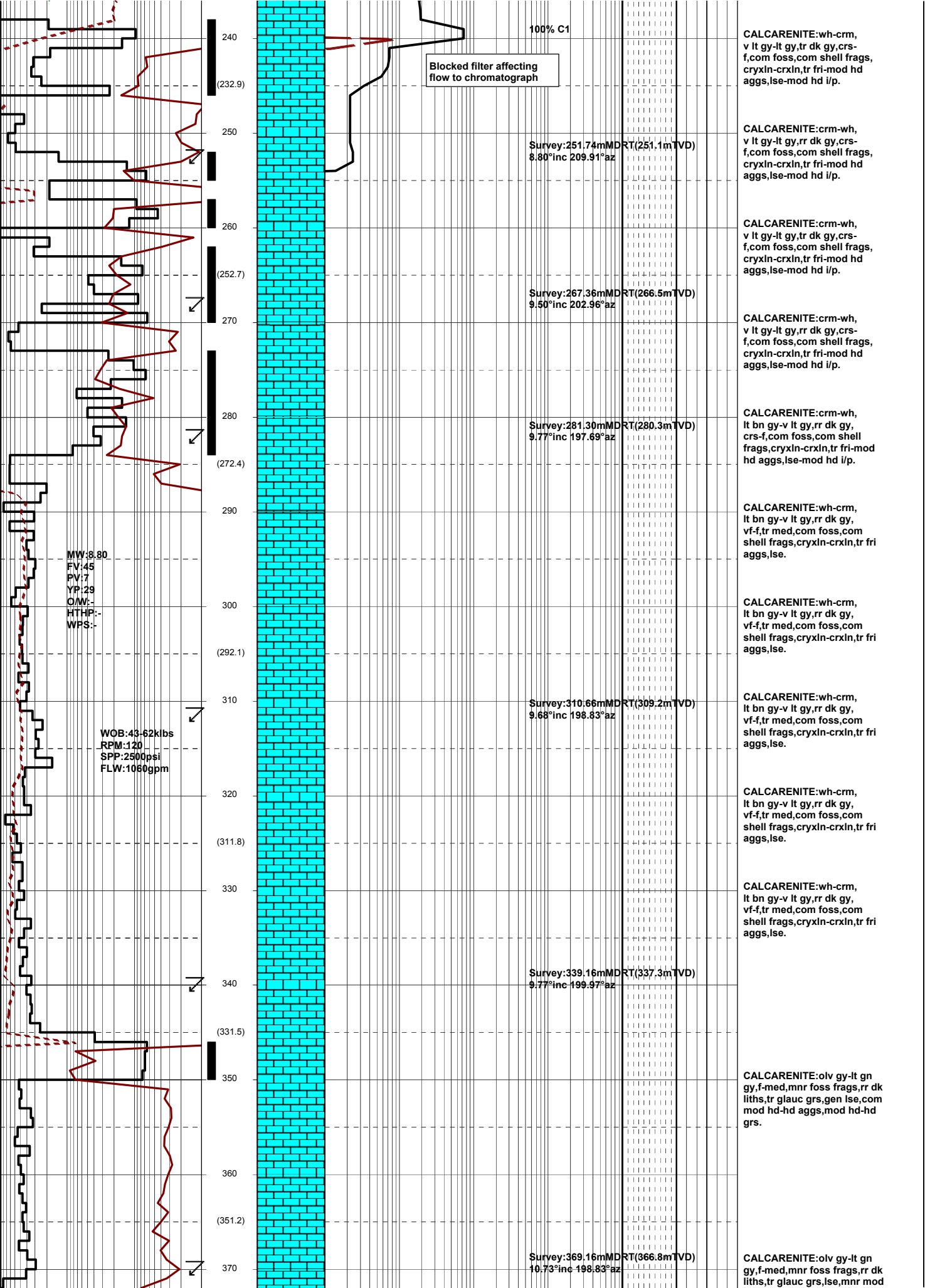
Cobia A33



GENERAL	SURFACE POSITION	HOLE / CASING INFO	DATE / DEPTH	ENGINEERS
Country : AUSTRALIA	Longitude : 148°18'32.826" E		Kick off Date: 18/06/2009	Gareth Munro
Permit : VIC / L5	Latitude : 38°26'57.543" S		Total Depth Date:	Phil Rady
Field : HALIBUT	MGA Co-ord X : 6143977.560 mE	20" Conductor at 201.3 mMDRT	Total Depth:	Colin Chadwick
Basin : GIPPSLAND	MGA Co-ord Y : 5743018.760 mN	10-3/4" Surface Csg at 587.0 mMDRT	True Vertical Depth:	Adam Sullivan
Well Type : DEVELOPMENT	RT to MSL : 41.0 m		Log Scale : 1/ 500	Leigh Dower
Rig Name : Nabors 175	RT to Sea Bed : 120.0 m			

ABBREVIATIONS		LITHOLOGY LEGEND				ENGINEERING LEGEND									
MW	Mud Weight	WOB	Weight on Bit (klbs)		Claystone		Marl		Bryozoa		Glauconite		Casing shoe		Sidewall core
FV	Funnel Viscosity	RPM	Rotations Per Min		Siltstone		Limestone		Radiolariae		Pyrite		Casing top		Core
PV	Plastic Viscosity	FLW	Flow Rate (gpm)		Sandstone		Dolomite		Echinoids		Foraminiferae		Survey		Mud gain
YP	Yield Point	SPP	Pump Pressure (psi)		Shale		Coal-lignite		Cement		MDT		Mud loss		
O/W	Oil/Water Ratio	RR	Re-Run Bit		Conglomerate		Volcanics								
WPS	Aq. Phase Salinity	TG	Trip Gas												
HPHT	Fluid Loss	CG	Connection Gas												
CI	Chlorides	BG	Background Gas												
Incl	Inclination	DGP	Drilled Gas Peak												
Az	Azimuth	MM	Mud Motor												





100% C1

Blocked filter affecting flow to chromatograph

CALCARENITE: wh-crm, v lt gy-lt gy, rr dk gy, crs-f, com foss, com shell frags, cryxln-crxln, tr fri-mod hd aggs, lse-mod hd i/p.

CALCARENITE: crm-wh, v lt gy-lt gy, rr dk gy, crs-f, com foss, com shell frags, cryxln-crxln, tr fri-mod hd aggs, lse-mod hd i/p.

CALCARENITE: crm-wh, v lt gy-lt gy, rr dk gy, crs-f, com foss, com shell frags, cryxln-crxln, tr fri-mod hd aggs, lse-mod hd i/p.

CALCARENITE: crm-wh, v lt gy-lt gy, rr dk gy, crs-f, com foss, com shell frags, cryxln-crxln, tr fri-mod hd aggs, lse-mod hd i/p.

CALCARENITE: crm-wh, lt bn gy-v lt gy, rr dk gy, crs-f, com foss, com shell frags, cryxln-crxln, tr fri-mod hd aggs, lse-mod hd i/p.

CALCARENITE: wh-crm, lt bn gy-v lt gy, rr dk gy, vf-f, tr med, com foss, com shell frags, cryxln-crxln, tr fri aggs, lse.

CALCARENITE: wh-crm, lt bn gy-v lt gy, rr dk gy, vf-f, tr med, com foss, com shell frags, cryxln-crxln, tr fri aggs, lse.

CALCARENITE: wh-crm, lt bn gy-v lt gy, rr dk gy, vf-f, tr med, com foss, com shell frags, cryxln-crxln, tr fri aggs, lse.

CALCARENITE: wh-crm, lt bn gy-v lt gy, rr dk gy, vf-f, tr med, com foss, com shell frags, cryxln-crxln, tr fri aggs, lse.

CALCARENITE: wh-crm, lt bn gy-v lt gy, rr dk gy, vf-f, tr med, com foss, com shell frags, cryxln-crxln, tr fri aggs, lse.

CALCARENITE: olv gy-lt gn gy, f-med, mnr foss frags, rr dk liths, tr glauc grs, gen lse, com mod hd-hd aggs, mod hd-hd grs.

CALCARENITE: olv gy-lt gn gy, f-med, mnr foss frags, rr dk liths, tr glauc grs, lse, mnr mod

Survey: 251.74mMDRT(251.1mTVD)
8.80°inc 209.91°az

Survey: 267.36mMDRT(266.5mTVD)
9.50°inc 202.96°az

Survey: 281.30mMDRT(280.3mTVD)
9.77°inc 197.69°az

Survey: 310.66mMDRT(309.2mTVD)
9.68°inc 198.83°az

Survey: 339.16mMDRT(337.3mTVD)
9.77°inc 199.97°az

Survey: 369.16mMDRT(366.8mTVD)
10.73°inc 198.83°az

MW: 8.80
FV: 45
PV: 7
YP: 29
O/W: -
HTHP: -
WPS: -

WOB: 43-62klbs
RPM: 120
SPP: 2500psi
FLW: 1060gpm

240

(232.9)

250

260

(252.7)

270

280

(272.4)

290

300

(292.1)

310

320

(311.8)

330

340

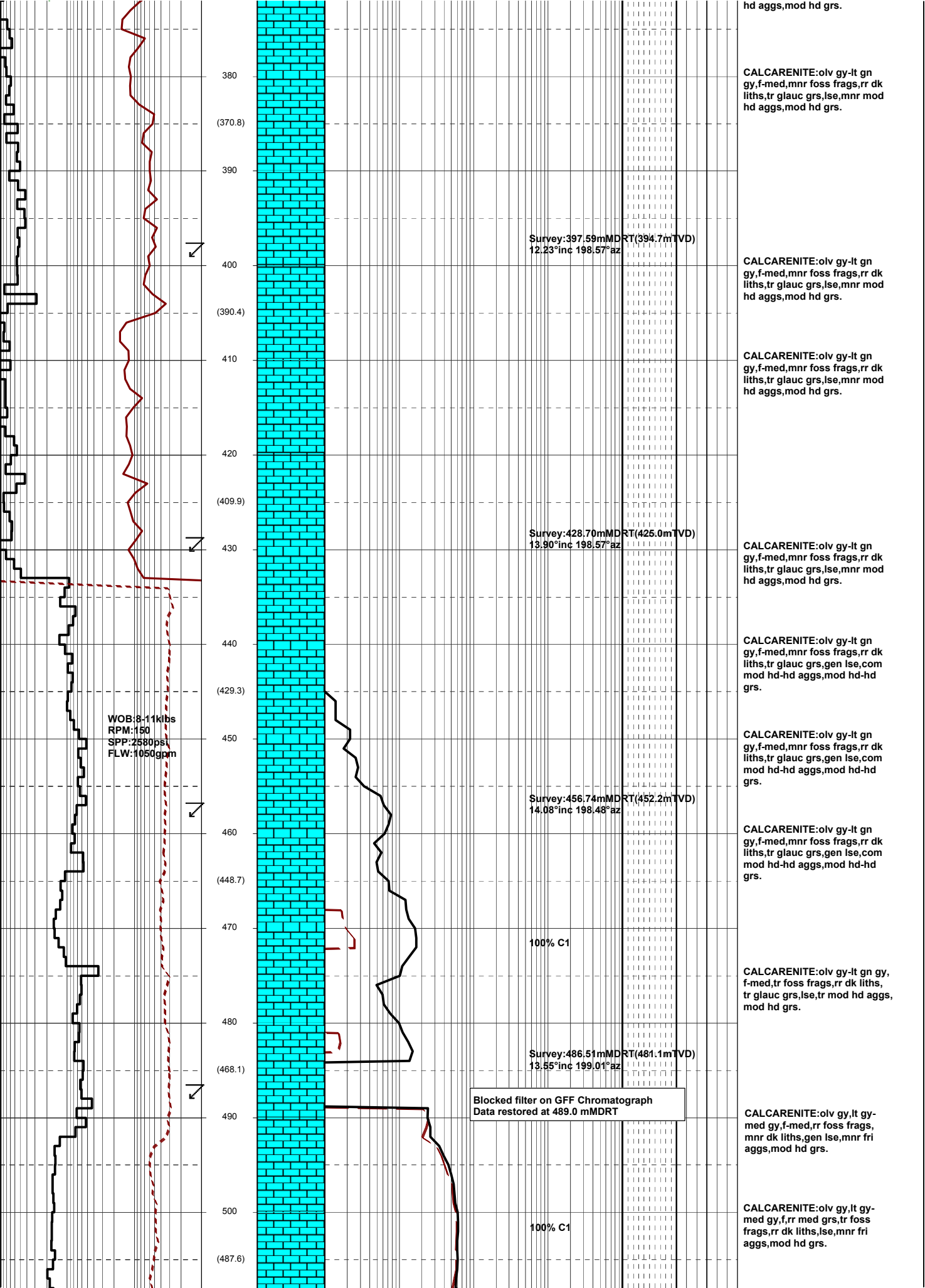
(331.5)

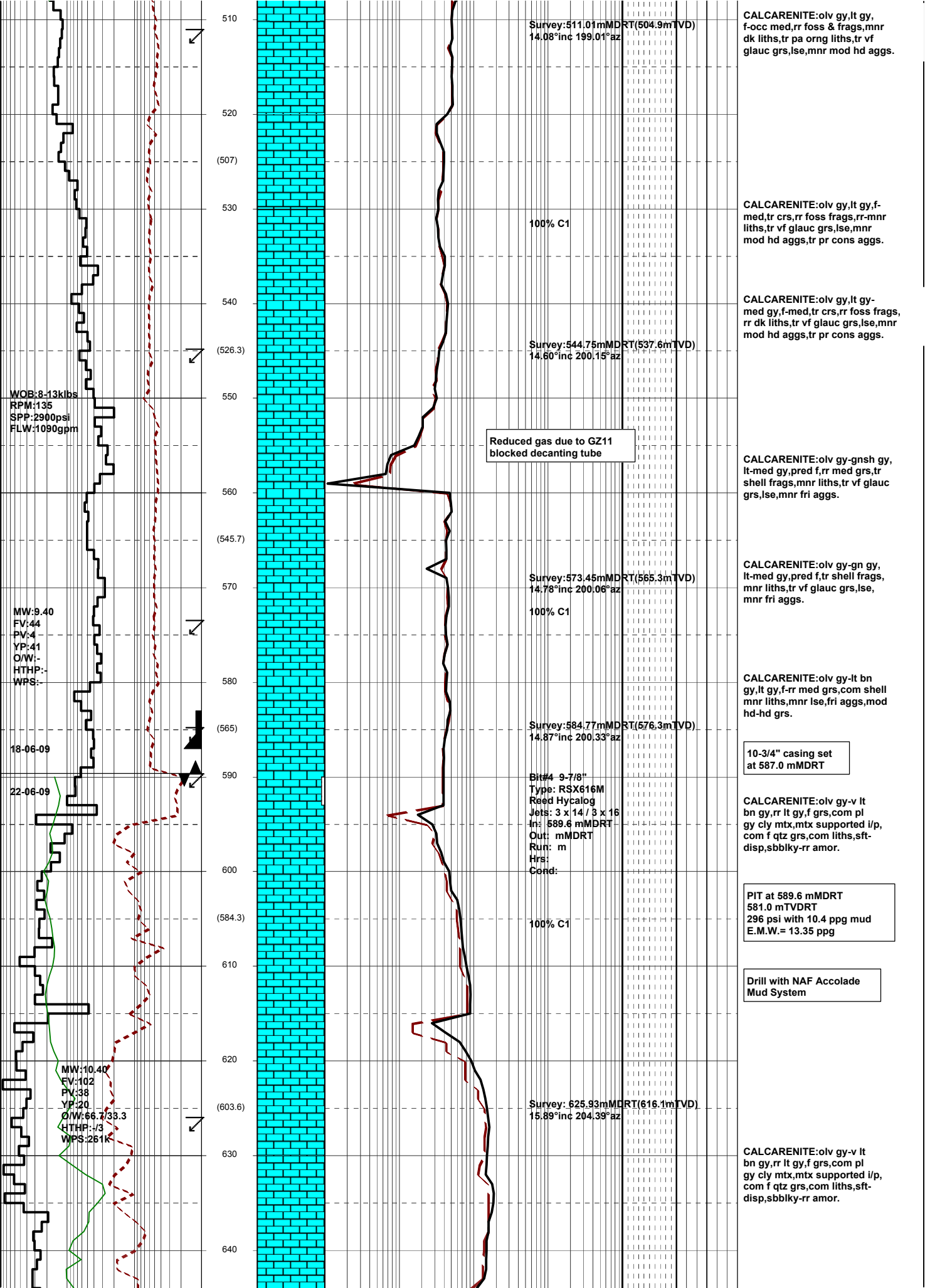
350

360

(351.2)

370





Survey: 511.01mMDRT(504.9mTVD)
14.08°inc 199.01°az

CALCARENITE: olv gy, lt gy, f-occ med, rr foss & frags, mnr dk liths, tr pa org liths, tr vf glauc grs, lse, mnr mod hd aggs.

100% C1

CALCARENITE: olv gy, lt gy, f-med, tr crs, rr foss frags, r-mnr liths, tr vf glauc grs, lse, mnr mod hd aggs, tr pr cons aggs.

Survey: 544.75mMDRT(537.6mTVD)
14.60°inc 200.15°az

CALCARENITE: olv gy, lt gy-med gy, f-med, tr crs, rr foss frags, rr dk liths, tr vf glauc grs, lse, mnr mod hd aggs, tr pr cons aggs.

Reduced gas due to GZ11 blocked decanting tube

CALCARENITE: olv gy-gnsh gy, lt-med gy, pred f, rr med grs, tr shell frags, mnr liths, tr vf glauc grs, lse, mnr fri aggs.

Survey: 573.45mMDRT(565.3mTVD)
14.78°inc 200.06°az

CALCARENITE: olv gy-gn gy, lt-med gy, pred f, tr shell frags, mnr liths, tr vf glauc grs, lse, mnr fri aggs.

Survey: 584.77mMDRT(576.3mTVD)
14.87°inc 200.33°az

CALCARENITE: olv gy-lt bn gy, lt gy, f-rr med grs, com shell mnr liths, mnr lse, fri aggs, mod hd-hd grs.

10-3/4" casing set at 587.0 mMDRT

Bit# 4 9-7/8"
Type: RSX616M
Reed Hycalog
Jets: 3 x 14 / 3 x 16
In: 589.6 mMDRT
Out: mMDRT
Run: m
Hrs:
Cond:

CALCARENITE: olv gy-v lt bn gy, rr lt gy, f grs, com pl gy cly mtx, mtx supported i/p, com f qtz grs, com liths, sft-disp, sbbly-rr amor.

PIT at 589.6 mMDRT
581.0 mTVDRT
296 psi with 10.4 ppg mud
E.M.W. = 13.35 ppg

Drill with NAF Accolade Mud System

Survey: 625.93mMDRT(616.1mTVD)
15.89°inc 204.39°az

CALCARENITE: olv gy-v lt bn gy, rr lt gy, f grs, com pl gy cly mtx, mtx supported i/p, com f qtz grs, com liths, sft-disp, sbbly-rr amor.

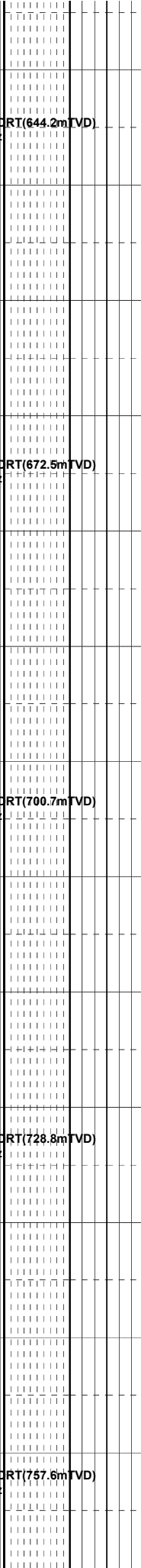
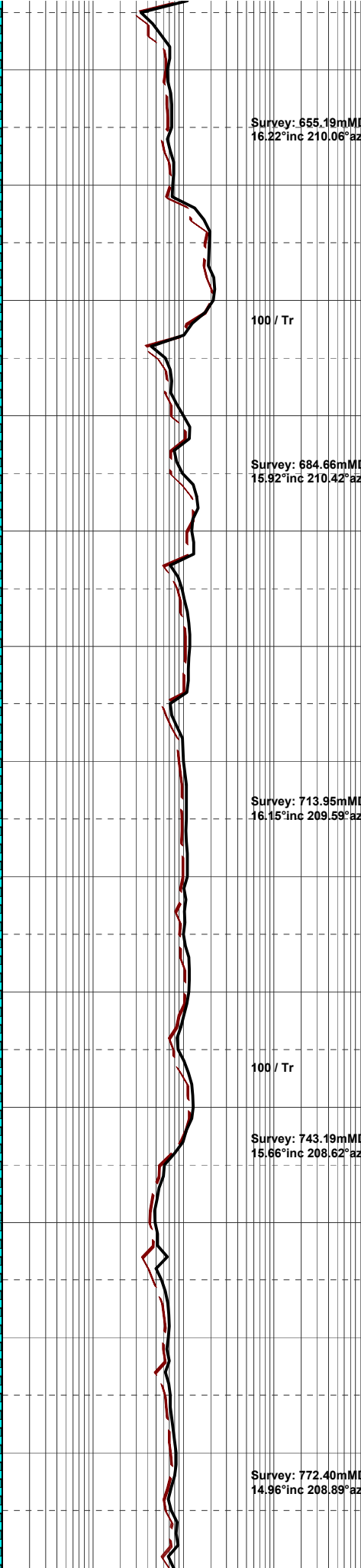
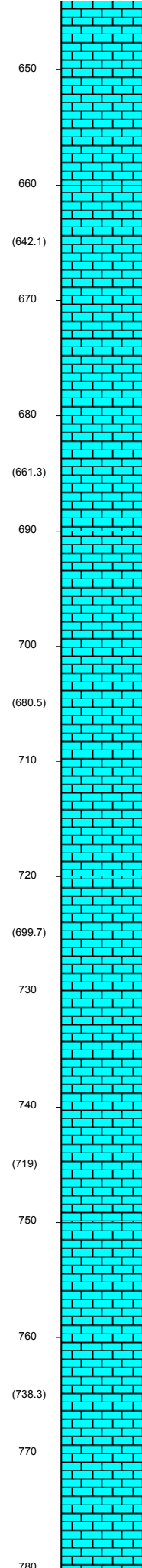
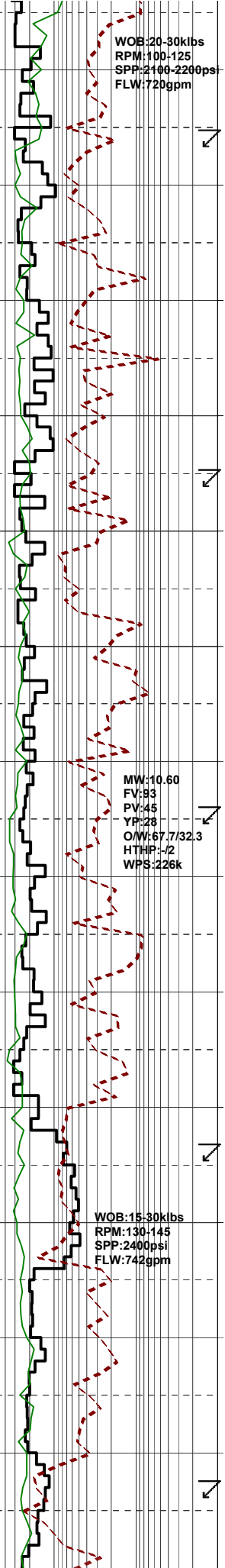
WOB: 8-13klbs
RPM: 135
SPP: 2900psi
FLW: 1090gpm

MW: 9.40
FV: 44
PV: 4
YP: 41
O/W: -
HTHP: -
WPS: -

18-06-09

22-06-09

MW: 10.40
FV: 102
PV: 38
YP: 20
O/W: 66.7/33.3
HTHP: 1/3
WPS: 261K



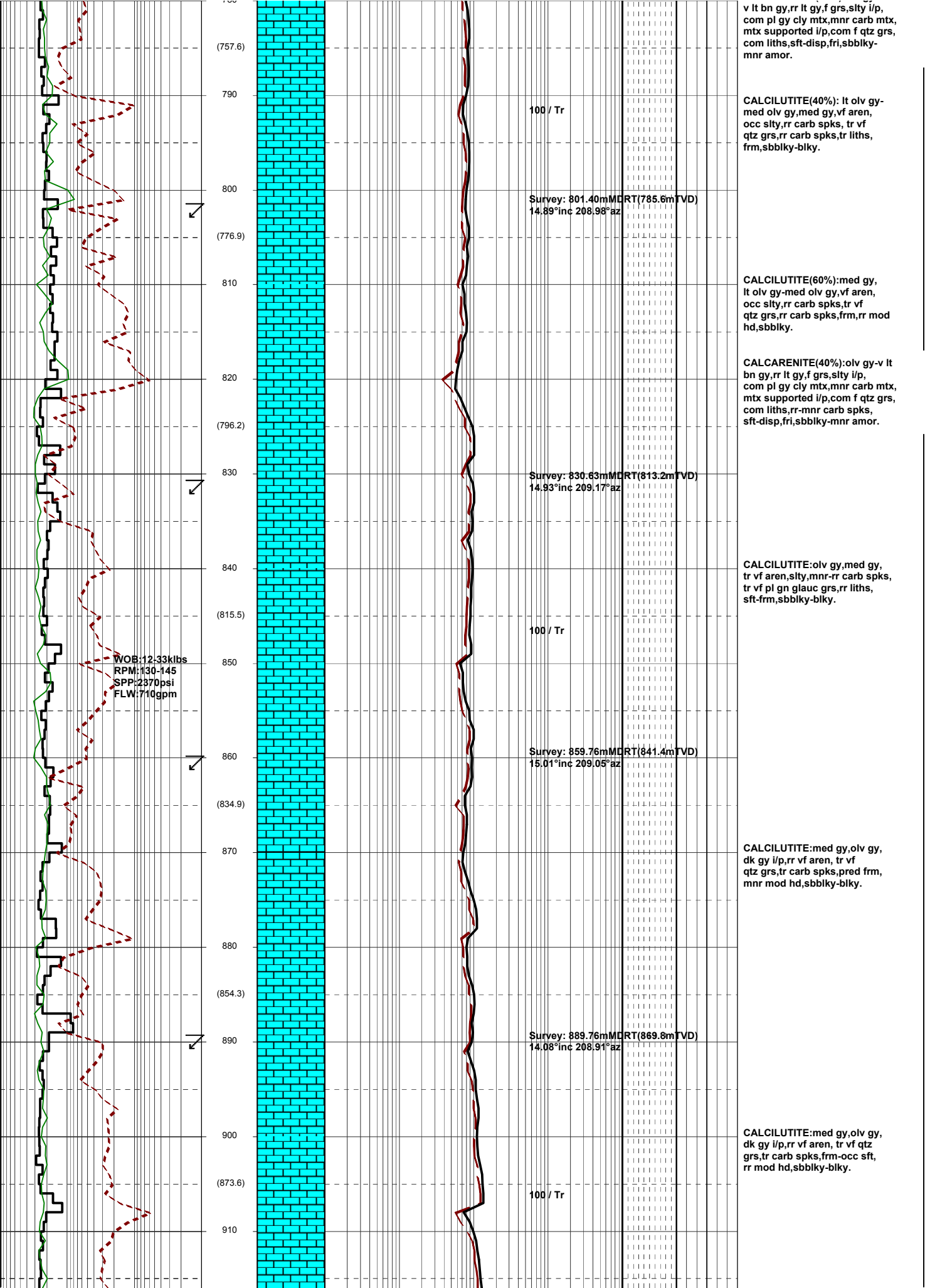
CALCARENITE: olv gy-v lt
bn gy, rr lt gy, f grs, com pl
gy cly mtx, mtx supported i/p,
com f qtz grs, com liths, sft-
disp, sbbiky-rr amor.

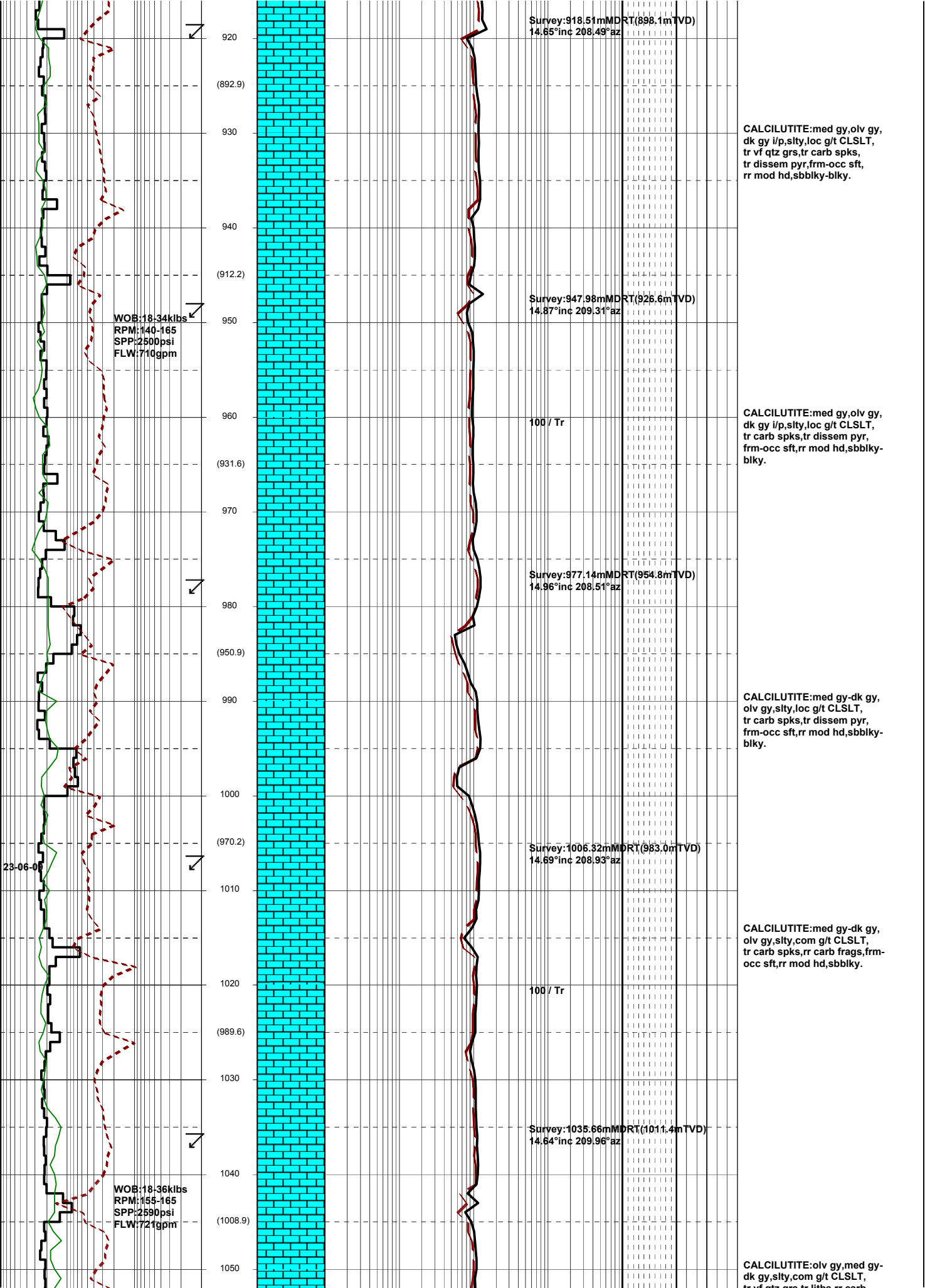
CALCARENITE: olv gy-v lt
bn gy, rr lt gy, f grs, com pl
gy cly mtx, mtx supported i/p,
com f qtz grs, com liths, sft-
disp, sbbiky-rr amor.

CALCARENITE: olv gy-v lt
bn gy, rr lt gy, f grs, slty i/p,
com pl gy cly mtx, mnr carb mtx,
mtx supported i/p, com f qtz grs,
com liths, sft-disp, fri, sbbiky.

CALCARENITE: olv gy-v lt
bn gy, rr lt gy, f grs, slty i/p,
com pl gy cly mtx, mnr carb mtx,
mtx supported i/p, com f qtz grs,
com liths, sft-disp, fri, sbbiky-
mnr amor.

CALCARENITE(60%): olv gy





Survey:918.51mMDRT(898.1mTVD)
14.65°inc 208.49°az

920
(892.9)
930
940
(912.2)
950
960
(931.6)
970
980
(950.9)
990
1000
(970.2)
1010
1020
(989.6)
1030
1040
(1008.9)
1050

WOB:18-34klbs
RPM:140-165
SPP:2500psi
FLW:710gpm

Survey:947.98mMDRT(926.6mTVD)
14.87°inc 209.31°az

100 / Tr

Survey:977.14mMDRT(954.8mTVD)
14.96°inc 208.51°az

Survey:1006.32mMDRT(983.0mTVD)
14.69°inc 208.93°az

100 / Tr

Survey:1035.66mMDRT(1011.4mTVD)
14.64°inc 209.96°az

CALCILUTITE:med gy,olv gy,
dk gy i/p,silty,loc g/t CLSLT,
tr vf qtz grs,tr carb spks,
tr dissem pyr,frm-occ sft,
rr mod hd,sbbiky-blky.

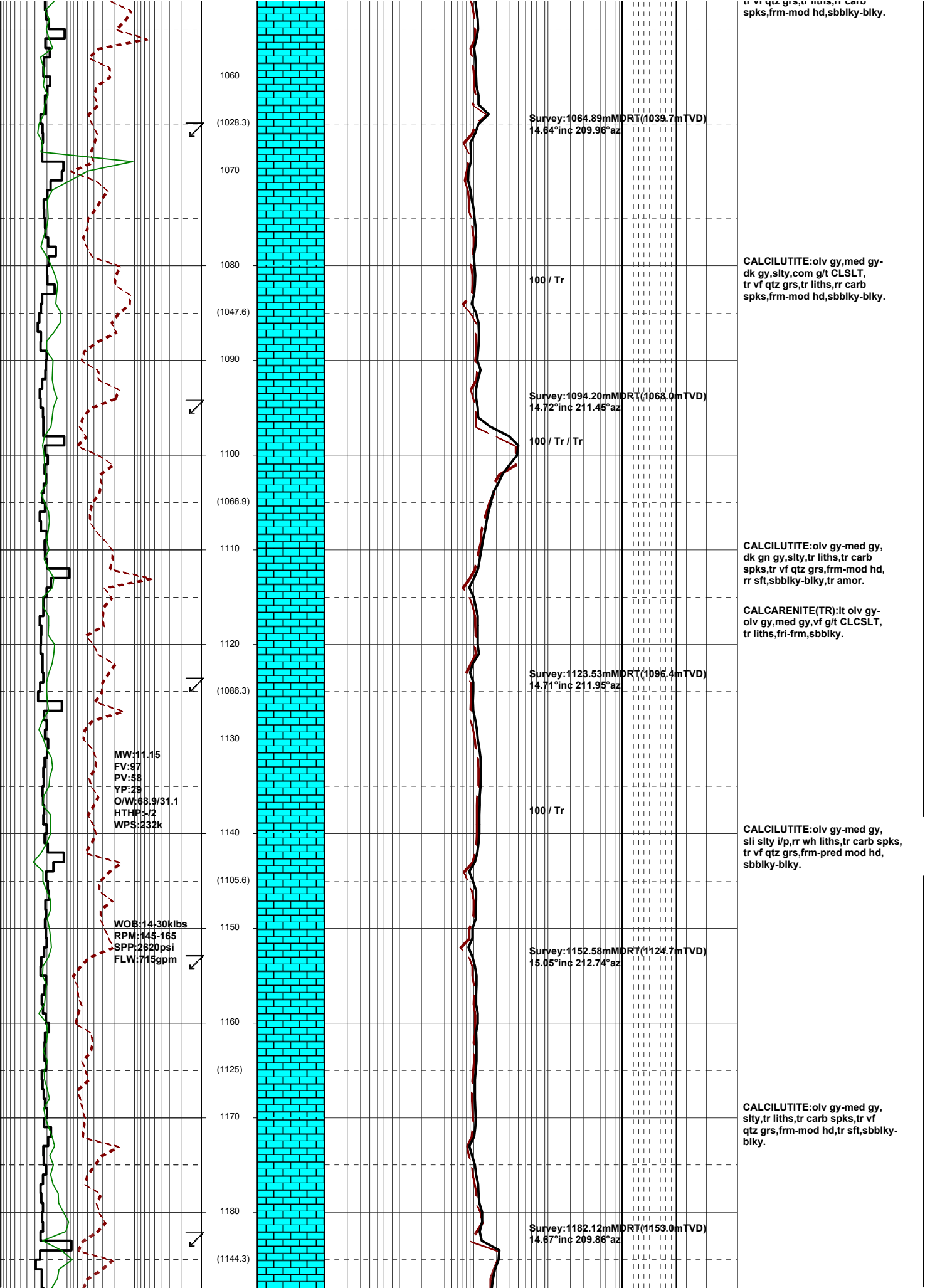
CALCILUTITE:med gy,olv gy,
dk gy i/p,silty,loc g/t CLSLT,
tr carb spks,tr dissem pyr,
frm-occ sft,rr mod hd,sbbiky-
blky.

CALCILUTITE:med gy-dk gy,
olv gy,silty,loc g/t CLSLT,
tr carb spks,tr dissem pyr,
frm-occ sft,rr mod hd,sbbiky-
blky.

CALCILUTITE:med gy-dk gy,
olv gy,silty,com g/t CLSLT,
tr carb spks,rr carb frags,frm-
occ sft,rr mod hd,sbbiky.

CALCILUTITE:olv gy,med gy-
dk gy,silty,com g/t CLSLT,
tr vf qtz grs,tr carb spks,
tr dissem pyr,frm-occ sft,
rr mod hd,sbbiky-blky.

23-06-08



tr vf qtz grs, tr liths, rr carb spks, frm-mod hd, sbbiky-blky.

1060
(1028.3)
1070
(1047.6)
1080
(1066.9)
1100
(1086.3)
1130
(1105.6)
1150
(1125)
1170
1180
(1144.3)

Survey: 1064.89m MDRT (1039.7mTVD)
14.64° inc 209.96° az

100 / Tr

Survey: 1094.20m MDRT (1068.0mTVD)
14.72° inc 211.45° az

100 / Tr / Tr

Survey: 1123.53m MDRT (1096.4mTVD)
14.71° inc 211.95° az

100 / Tr

Survey: 1152.58m MDRT (1124.7mTVD)
15.05° inc 212.74° az

Survey: 1182.12m MDRT (1153.0mTVD)
14.67° inc 209.86° az

CALCILUTITE: olv gy, med gy-
dk gy, slty, com g/t CLSLT,
tr vf qtz grs, tr liths, rr carb
spks, frm-mod hd, sbbiky-blky.

CALCILUTITE: olv gy-med gy,
dk gn gy, slty, tr liths, tr carb
spks, tr vf qtz grs, frm-mod hd,
rr sft, sbbiky-blky, tr amor.

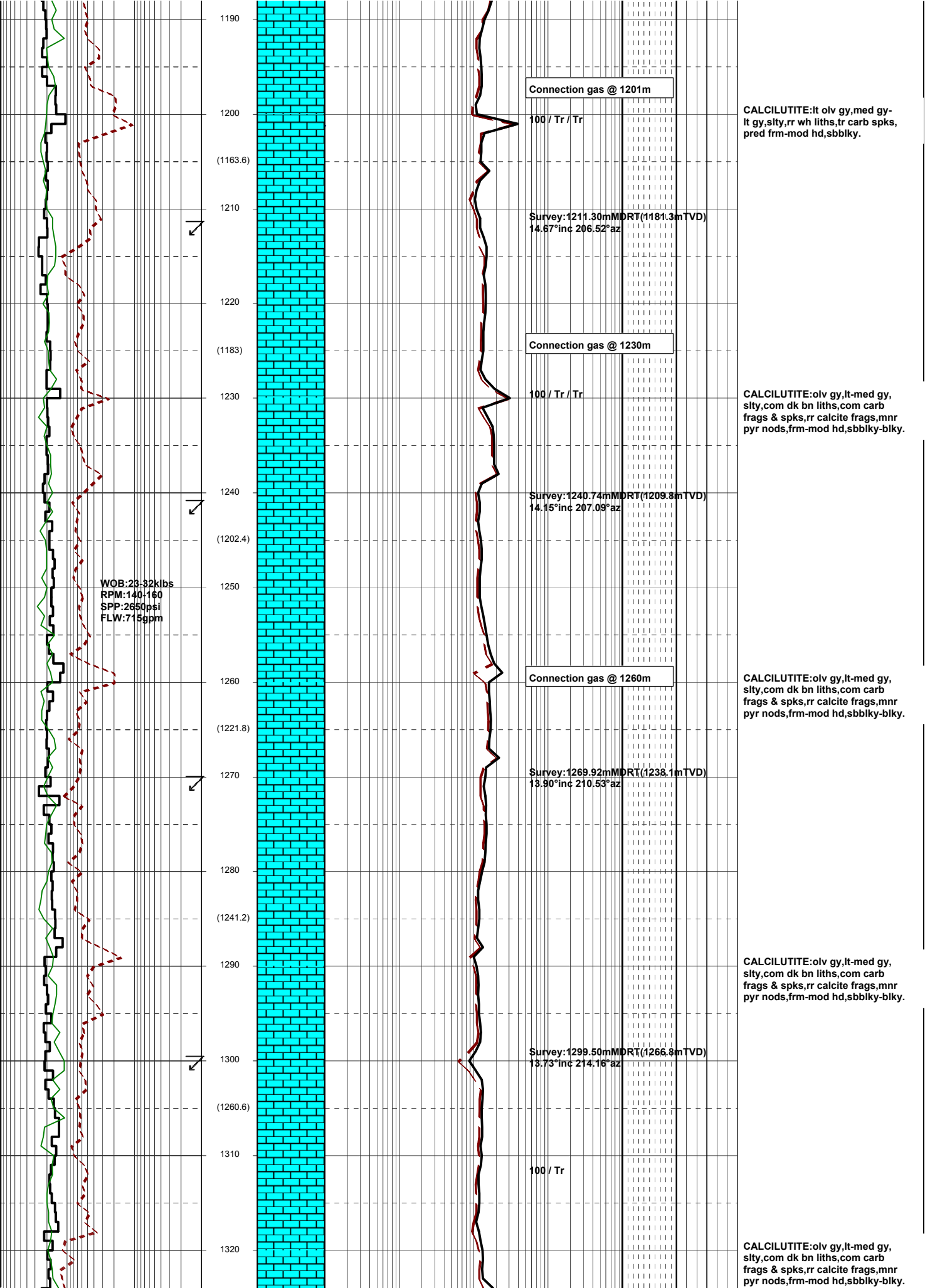
CALCARENITE (TR): It olv gy-
olv gy, med gy, vf g/t CLSLT,
tr liths, fri-frm, sbbiky.

CALCILUTITE: olv gy-med gy,
sli slty i/p, rr wh liths, tr carb spks,
tr vf qtz grs, frm-pred mod hd,
sbbiky-blky.

CALCILUTITE: olv gy-med gy,
slty, tr liths, tr carb spks, tr vf
qtz grs, frm-mod hd, tr sft, sbbiky-
blky.

MW: 11.15
FV: 97
PV: 58
YP: 23
O/W: 68.9/31.1
HTHP: -2
WPS: 232k

WOB: 14.30kibs
RPM: 145-165
SPP: 2520psi
FLW: 715gpm



WOB: 23-32klbs
 RPM: 140-160
 SPP: 2650psi
 FLW: 715gpm

Connection gas @ 1201m

100 / Tr / Tr

CALCILUTITE: it olv gy, med gy-
 lt gy, slty, rr wh liths, tr carb spks,
 pred frm-mod hd, sbbiky.

Survey: 1211.30m MDRT (1181.3mTVD)
 14.67° inc 206.52° az

Connection gas @ 1230m

100 / Tr / Tr

CALCILUTITE: olv gy, lt-med gy,
 slty, com dk bn liths, com carb
 frags & spks, rr calcite frags, mnr
 pyr nods, frm-mod hd, sbbiky-blky.

Survey: 1240.74m MDRT (1209.8mTVD)
 14.15° inc 207.09° az

Connection gas @ 1260m

CALCILUTITE: olv gy, lt-med gy,
 slty, com dk bn liths, com carb
 frags & spks, rr calcite frags, mnr
 pyr nods, frm-mod hd, sbbiky-blky.

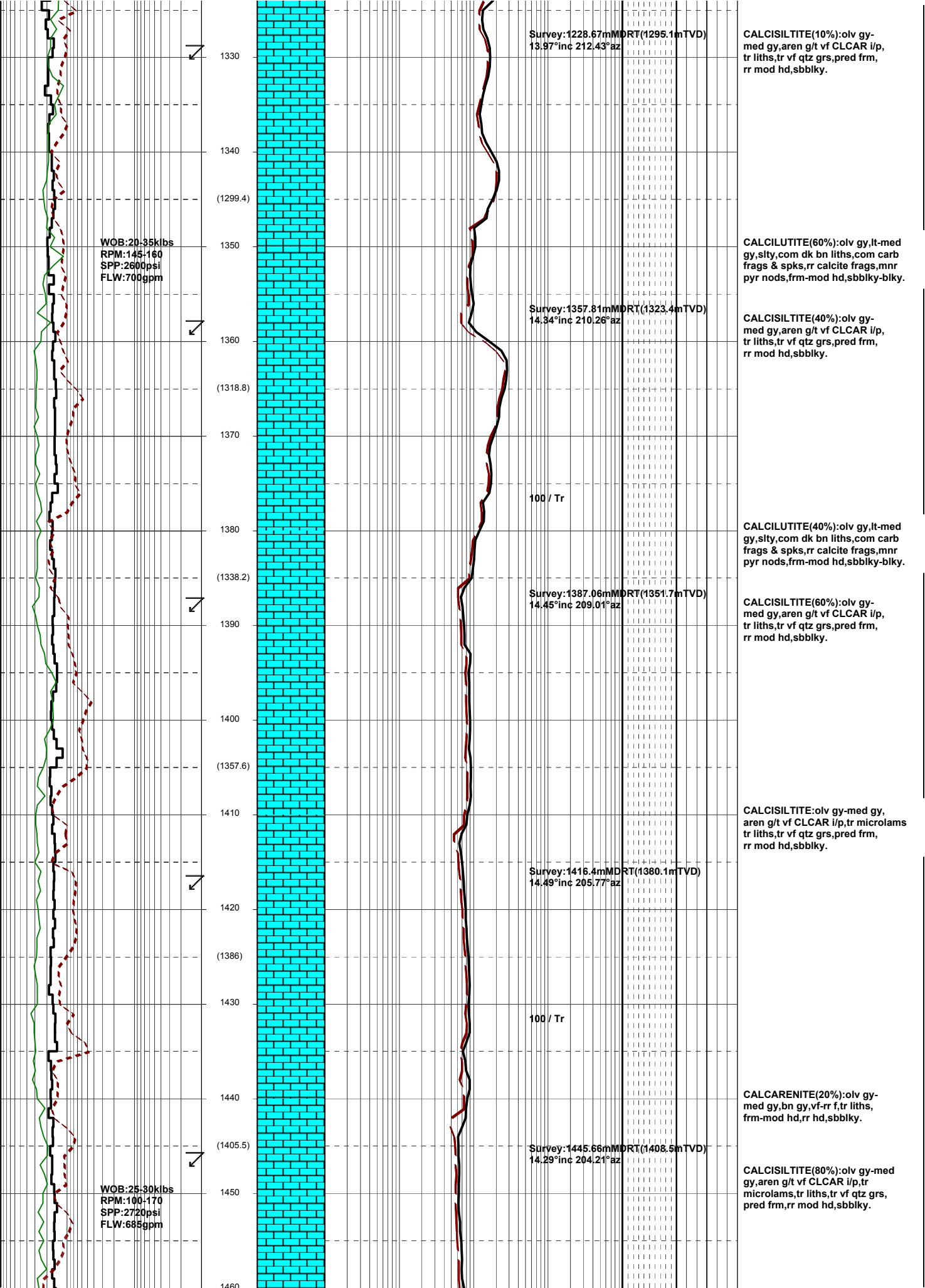
Survey: 1269.92m MDRT (1238.1mTVD)
 13.90° inc 210.53° az

CALCILUTITE: olv gy, lt-med gy,
 slty, com dk bn liths, com carb
 frags & spks, rr calcite frags, mnr
 pyr nods, frm-mod hd, sbbiky-blky.

Survey: 1299.50m MDRT (1266.8mTVD)
 13.73° inc 214.16° az

100 / Tr

CALCILUTITE: olv gy, lt-med gy,
 slty, com dk bn liths, com carb
 frags & spks, rr calcite frags, mnr
 pyr nods, frm-mod hd, sbbiky-blky.



MW:11.80
FV:104
PV:57
YP:35
O/W:68.4/31.6
HTHP:-
WPS:240k

WOB:30-35klbs
RPM:140-150
SPP:2850psi
FLW:695gpm

(1424.3)

1470

1480

(1443.8)

1490

1500

(1463.2)

1510

1520

(1482.4)

1530

1540

(1501.7)

1550

1560

(1521.2)

1570

1580

(1540.6)

1590

Survey:1474.99mMDRT(1436.9mTVD)
14.63°inc 207.76°az

100 / Tr

Survey:1504.27mMDRT(1465.2mTVD)
14.41°inc 209.65°az

Survey:1533.67mMDRT(1493.7mTVD)
14.41°inc 207.72°az

100 / Tr

Survey:1562.71mMDRT(1521.8mTVD)
14.32°inc 206.91°az

Survey:1592.18mMDRT(1550.4mTVD)
14.27°inc 205.60°az

CALCARENITE(30%):olv gy-med gy,bn gy,vf-rr f,tr liths, frm-mod hd,rr hd,sbbkly.

CALCISILTITE(70%):olv gy-med gy,aren g/t vf CLCAR i/p,tr microlams,tr liths,tr vf qtz grs, pred frm,rr mod hd,sbbkly.

CALCARENITE(10%):olv gy-med gy,bn gy,vf-rr f,tr liths, frm-mod hd,rr hd,sbbkly.

CALCISILTITE(90%):olv gy-med gy,aren g/t vf CLCAR i/p,tr microlams,tr liths,tr vf qtz grs, pred frm,rr mod hd,sbbkly.

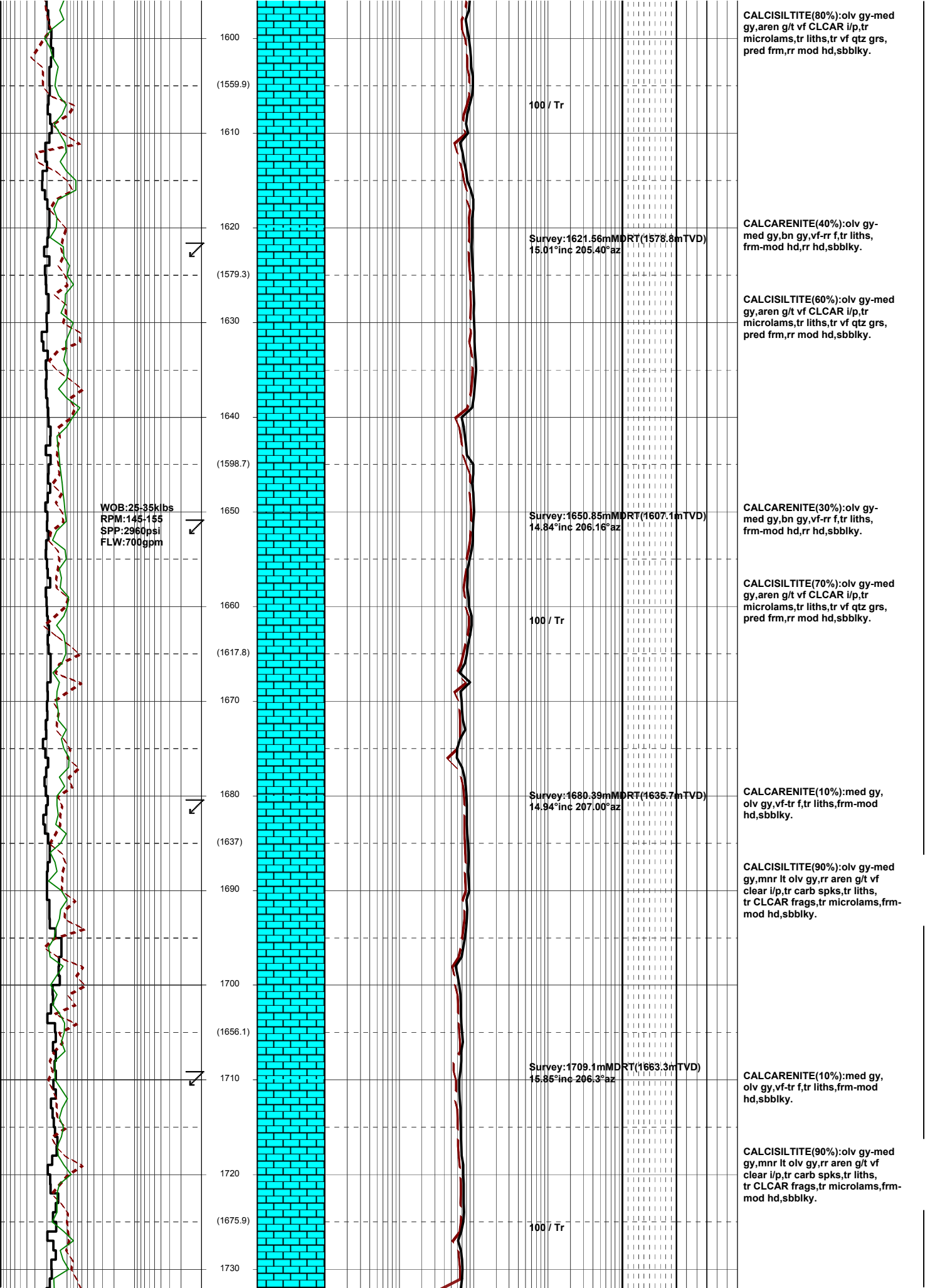
CALCARENITE(10%):olv gy-med gy,bn gy,vf-rr f,tr liths, frm-mod hd,rr hd,sbbkly.

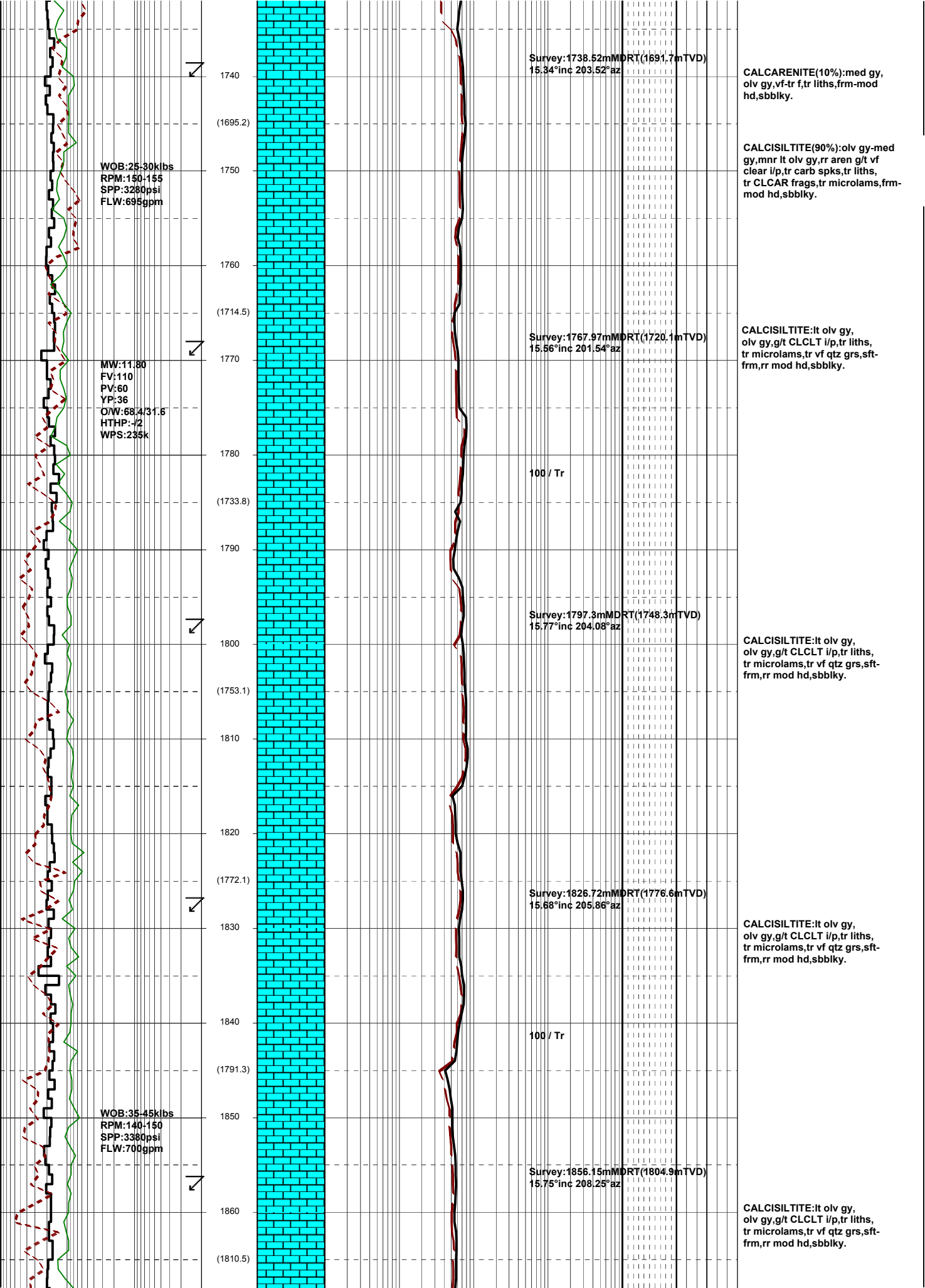
CALCISILTITE(90%):olv gy-med gy,aren g/t vf CLCAR i/p,tr microlams,tr liths,tr vf qtz grs, pred frm,rr mod hd,sbbkly.

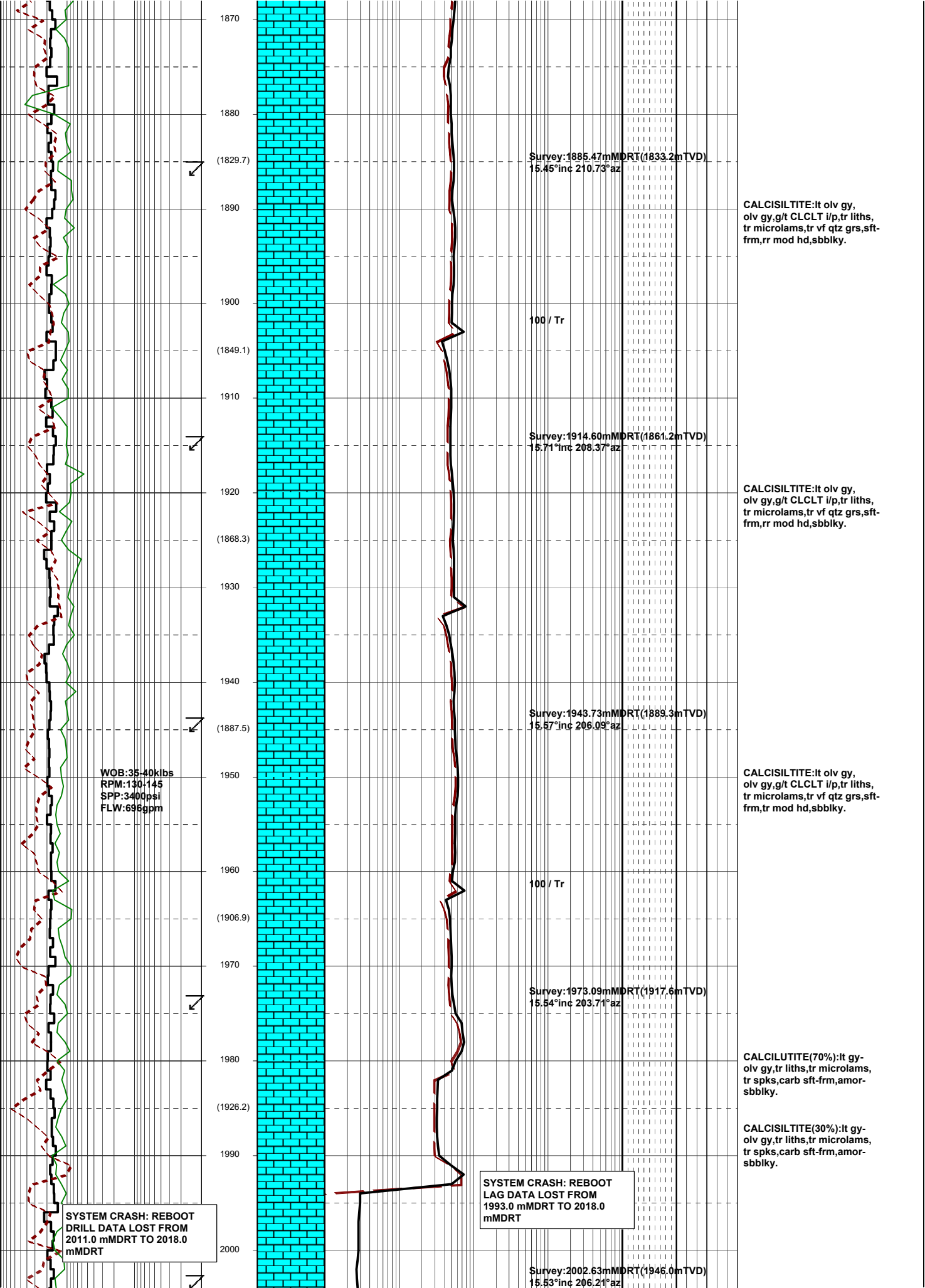
CALCARENITE(10%):olv gy-med gy,bn gy,vf-rr f,tr liths, frm-mod hd,rr hd,sbbkly.

CALCISILTITE(90%):olv gy-med gy,aren g/t vf CLCAR i/p,tr microlams,tr liths,tr vf qtz grs, pred frm,rr mod hd,sbbkly.

CALCARENITE(20%):olv gy-med gy,bn gy,vf-rr f,tr liths, frm-mod hd,rr hd,sbbkly.







1870
1880
(1829.7)
1890
1900
(1849.1)
1910
(1868.3)
1920
1930
(1887.5)
1940
1950
1960
(1906.9)
1970
1980
(1926.2)
1990
2000

Survey: 1885.47mMDRT (1833.2mTVD)
15.45°inc 210.73°az

100 / Tr

Survey: 1914.60mMDRT (1861.2mTVD)
15.71°inc 208.37°az

Survey: 1943.73mMDRT (1889.3mTVD)
15.57°inc 206.09°az

100 / Tr

Survey: 1973.09mMDRT (1917.6mTVD)
15.54°inc 203.71°az

SYSTEM CRASH: REBOOT
LAG DATA LOST FROM
1993.0 mMDRT TO 2018.0
mMDRT

Survey: 2002.63mMDRT (1946.0mTVD)
15.53°inc 206.21°az

WOB: 35-40klbs
RPM: 130-145
SPP: 3400psi
FLW: 698gpm

SYSTEM CRASH: REBOOT
DRILL DATA LOST FROM
2011.0 mMDRT TO 2018.0
mMDRT

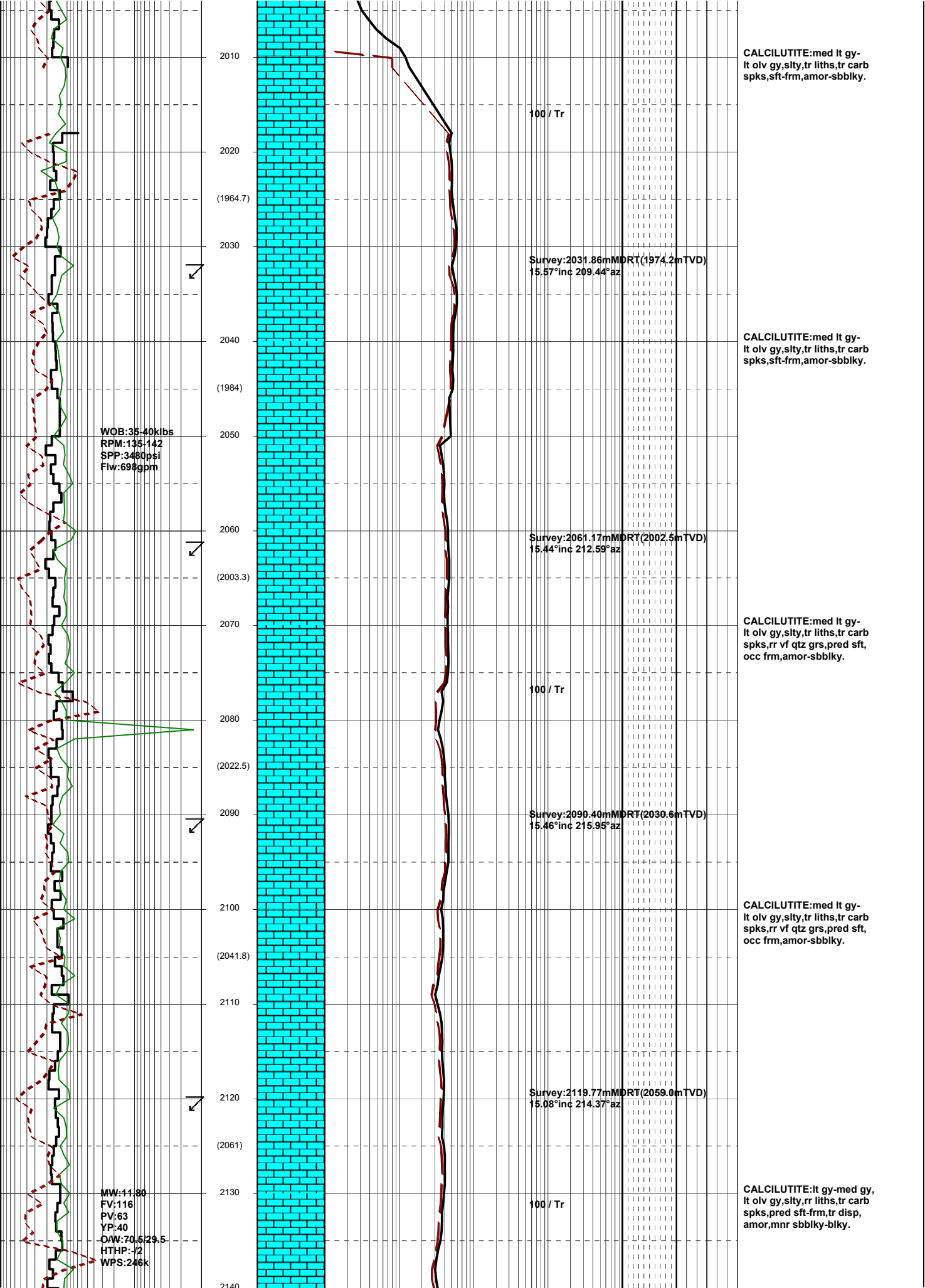
CALCISILTITE: It olv gy,
olv gy, g/t CLCLT i/p, tr liths,
tr microlams, tr vf qtz grs, sft-
frm, rr mod hd, sbbkly.

CALCISILTITE: It olv gy,
olv gy, g/t CLCLT i/p, tr liths,
tr microlams, tr vf qtz grs, sft-
frm, rr mod hd, sbbkly.

CALCISILTITE: It olv gy,
olv gy, g/t CLCLT i/p, tr liths,
tr microlams, tr vf qtz grs, sft-
frm, tr mod hd, sbbkly.

CALCILUTITE(70%): It gy-
olv gy, tr liths, tr microlams,
tr spks, carb sft-frm, amor-
sbbkly.

CALCISILTITE(30%): It gy-
olv gy, tr liths, tr microlams,
tr spks, carb sft-frm, amor-
sbbkly.



2100
 (1964.7)
 2130
 (2061)

WOB:35-40klbs
 RPM:135-142
 SPP:3480psi
 Flw:698gpm

MW:11.80
 FV:116
 PV:63
 YP:40
 ORW:70.5/29.5
 HTHP:-72
 WPS:246k

100 / Tr
 Survey:2031.86mMDRT(1974.2mTVD)
 15.57°inc 209.44°az
 Survey:2061.17mMDRT(2002.5mTVD)
 15.44°inc 212.59°az
 Survey:2090.40mMDRT(2030.6mTVD)
 15.46°inc 215.95°az
 Survey:2119.77mMDRT(2059.0mTVD)
 15.08°inc 214.37°az
 100 / Tr

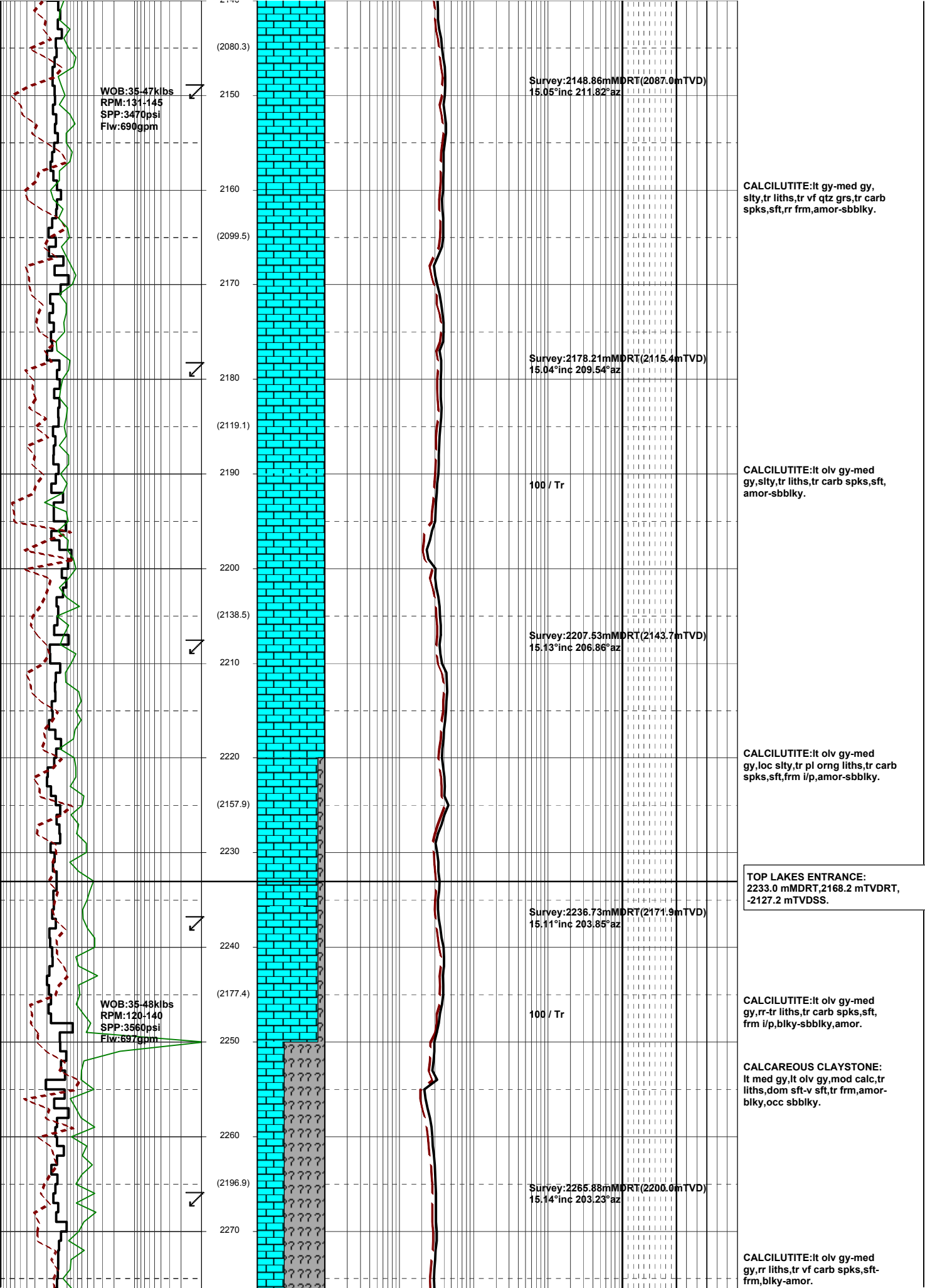
CALCILUTITE:med lt gy-
 lt olv gy,silty,tr liths,tr carb
 spks,sft frm,amor-sbblky.

CALCILUTITE:med lt gy-
 lt olv gy,silty,tr liths,tr carb
 spks,sft frm,amor-sbblky.

CALCILUTITE:med lt gy-
 lt olv gy,silty,tr liths,tr carb
 spks,rr vf qtz grs,pred sft,
 occ frm,amor-sbblky.

CALCILUTITE:med lt gy-
 lt olv gy,silty,tr liths,tr carb
 spks,rr vf qtz grs,pred sft,
 occ frm,amor-sbblky.

CALCILUTITE:lt gy-med gy,
 lt olv gy,silty,rr liths,tr carb
 spks,pred sft frm, tr disp,
 amor,mnr sbblky-blky.



WOB: 35-47 klbs
 RPM: 131-145
 SPP: 3470 psi
 Flw: 690 gpm

Survey: 2148.86m MDRT (2087.0m TVD)
 15.05° inc 211.82° az

Survey: 2178.21m MDRT (2115.4m TVD)
 15.04° inc 209.54° az

Survey: 2207.53m MDRT (2143.7m TVD)
 15.13° inc 206.86° az

Survey: 2236.73m MDRT (2171.9m TVD)
 15.11° inc 203.85° az

Survey: 2265.88m MDRT (2200.0m TVD)
 15.14° inc 203.23° az

WOB: 35-48 klbs
 RPM: 120-140
 SPP: 3560 psi
 Flw: 697 gpm

CALCILUTITE: It gy-med gy,
 slty, tr liths, tr vf qtz grs, tr carb
 spks, sft, rr frm, amor-sbbkly.

CALCILUTITE: It olv gy-med
 gy, slty, tr liths, tr carb spks, sft,
 amor-sbbkly.

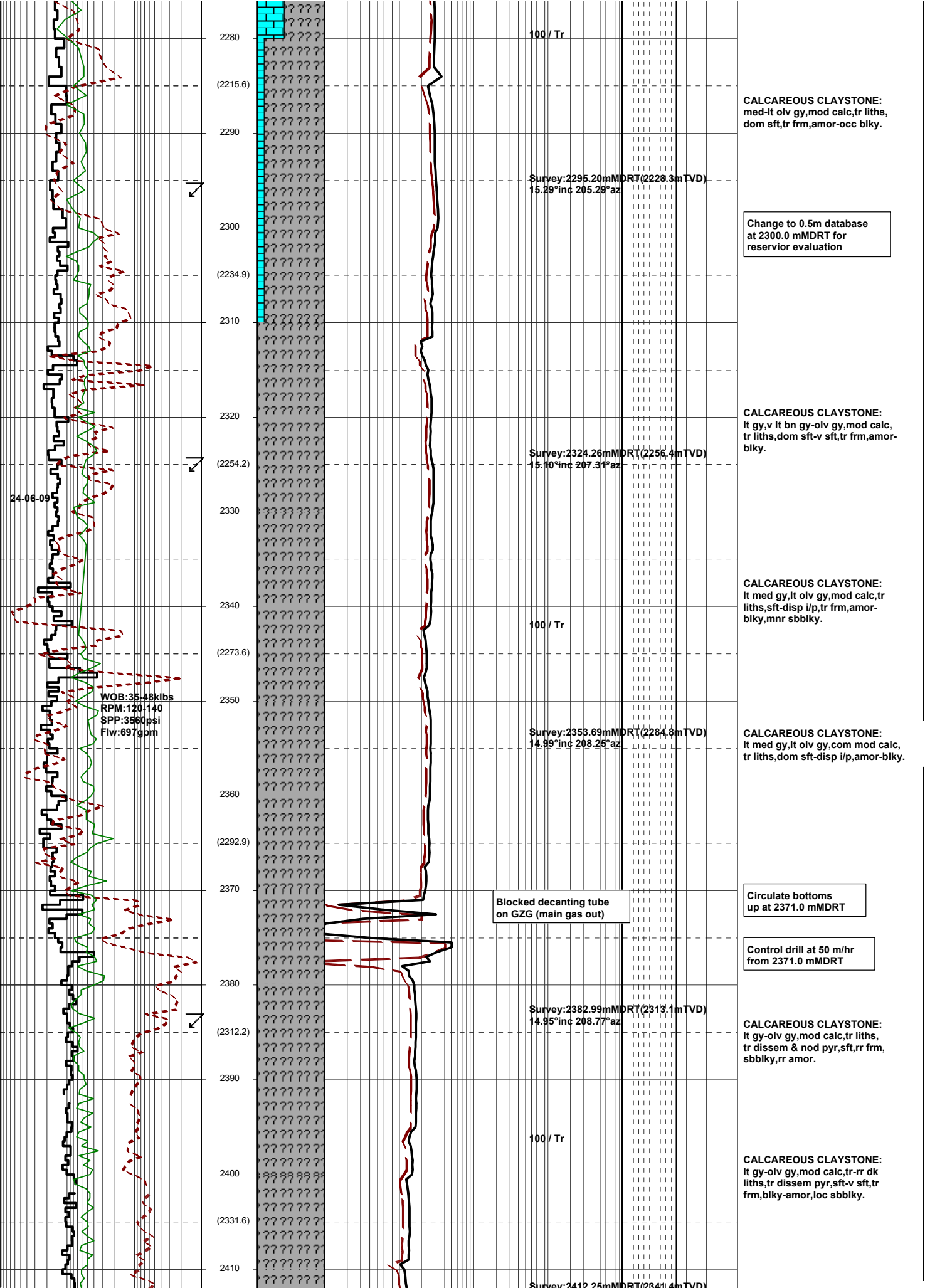
CALCILUTITE: It olv gy-med
 gy, loc slty, tr pl org liths, tr carb
 spks, sft, frm l/p, amor-sbbkly.

TOP LAKES ENTRANCE:
 2233.0 m MDRT, 2168.2 m TVD DRT,
 -2127.2 m TVD SSS.

CALCILUTITE: It olv gy-med
 gy, rr-tr liths, tr carb spks, sft,
 frm l/p, blkly-sbbkly, amor.

CALCAREOUS CLAYSTONE:
 It med gy, It olv gy, mod calc, tr
 liths, dom sft-v sft, tr frm, amor-
 blkly, occ sbbkly.

CALCILUTITE: It olv gy-med
 gy, rr liths, tr vf carb spks, sft-
 frm, blkly- amor.



2280
(2215.6)
2290
2300
(2234.9)
2310
2320
(2254.2)
2330
2340
(2273.6)
2350
2360
(2292.9)
2370
2380
(2312.2)
2390
2400
(2331.6)
2410

100 / Tr

Survey: 2295.20mMVRT (2228.3mTVD)
15.29°inc 205.29°az

Survey: 2324.26mMVRT (2256.4mTVD)
15.10°inc 207.31°az

100 / Tr

Survey: 2353.69mMVRT (2284.8mTVD)
14.99°inc 208.25°az

Blocked decanting tube
on GZG (main gas out)

Survey: 2382.99mMVRT (2313.1mTVD)
14.95°inc 208.77°az

100 / Tr

Survey: 2412.25mMVRT (2341.4mTVD)

CALCAREOUS CLAYSTONE:
med-lt olv gy,mod calc,tr liths,
dom sft,tr frm,amor-occ blkly.

Change to 0.5m database
at 2300.0 mMVRT for
reservoir evaluation

CALCAREOUS CLAYSTONE:
lt gy,v lt bn gy-olv gy,mod calc,
tr liths,dm sft-v sft,tr frm,amor-
blkly.

CALCAREOUS CLAYSTONE:
lt med gy,lt olv gy,mod calc,tr
liths,sft-disp i/p,tr frm,amor-
blkly,mnr sbbkly.

CALCAREOUS CLAYSTONE:
lt med gy,lt olv gy,com mod calc,
tr liths,dm sft-disp i/p,amor-blky.

Circulate bottoms
up at 2371.0 mMVRT

Control drill at 50 m/hr
from 2371.0 mMVRT

CALCAREOUS CLAYSTONE:
lt gy-olv gy,mod calc,tr liths,
tr dissem & nod pyr,sft-v sft,
sbbkly,rr amor.

CALCAREOUS CLAYSTONE:
lt gy-olv gy,mod calc,tr-rr dk
liths,tr dissem pyr,sft-v sft,tr
frm,blkly-amor,loc sbbkly.

24-06-09

WOB: 35-48klbs
RPM: 120-140
SPP: 3560psi
Flw: 697gpm

14.88°inc 210.49°az

CALCAREOUS CLAYSTONE:
lt gy-olv gy,mod calc,tr-r dk
liths,tr disse pyr,tr vf carb spks,
sft-mnr frm,gen sbbkly.

2420
(2350.9)
2430
2440
(2370.3)
2450
2460
(2389.5)
2470
2480
(2408.8)
2490
2500
(2428.2)
2510
2520
(2447.5)
2530
2540
(2466.6)

Survey:2441.61mMDRT(2369.7mTVD)
14.89°inc 210.96°az

CALCAREOUS CLAYSTONE:
lt gy-lt olv gy,tr med gy,mod calc,
rr liths,tr disse pyr,sft-occ frm,
sbbkly-blky,mnr amor.

CALCAREOUS CLAYSTONE:
lt gy-lt olv gy,mod calc,tr disse
pyr i/p,tr liths,sft-v sft,disp,loc
frm,blky,amor.

SANDSTONE:(Tr),v pa gy,trnsl,vf,
sa-sr,com pa gy,arg mtx,mnr glauc,
tr liths,fri-disp,sbbkly.

100 / Tr

TOP LATROBE GROUP:
2462.0mMDRT,2389.3mTVDRT
-2348.3 mTVDSS.

44 / 15 / 21 / 15 / 5

SANDSTONE:opq,trnsl,v pa gy,vf
aggs,crs-v crs,lse grs,mod-pr srt,
sa-sr,mnr pa gy arg mtx,tr glauc,
pred lse cln qtz grs,mnr fri aggs,
pr vis por,pr-fr inf por,fluor.

Survey:2470.87mMDRT(2398.0mTV)
15.15°inc 212.52°az

47 / 13 / 20 / 15 / 5

FLUOR:(Tr-5%),2462-2480m
no vis oil stn,dll-mod brt,yel gn,
pnpnt fluor,no chert cmt,v slw
diffusine dll yel gn cut fluor,
mod c/c.

55 / 13 / 15 / 13 / 4

SANDSTONE:opq,trnsl,v pa bn,f-
med,mod srt,sa-sr,sbsph,tr pa bn
mtx,wk sil cmt,mnr nod pyr,tr glauc,
fri-frm aggs,lse,pr vis & inf por,
fluor.

Survey:2499.77mMDRT(2425.9mTVD)
15.34°inc 211.68°az

SILTSTONE:lt bn gy-bn gy,olv
gy,aren i/p,mnr carb mat,tr micmic,
sft-rr frm,sbbkly.

WOB:10-20kps
RPM:120-130
SPP:3130psi
Fw:703gpm

